



Flight Plan & Site Survey

Created using **RPAS Wilco**[®]

Operation Name:	ASRCM
Pilot Name:	[REDACTED]
Pilot Certificate:	[REDACTED]
Flight Start:	April 26, 2023 6:19 PM
Flight End:	April 26, 2023 8:19 PM
Flight Area (Latitude):	45° 4' 33.40" N (45.076)
Flight Area (Longitude):	63° 21' 43.90" W (-63.362)
Altitude - Radius:	Alt: 600 ft - Rad: 926.0 m (0.5 nm)
Airspace:	UNCONTROLLED
FIR - Contact:	CZQM - 506-867-7173

Please ensure you received all required authorizations prior to flight.

Disclaimer

This Site Survey was created using RPAS Wilco by AIM Robotics. The flight plan contained is intended only for RPAS flights on the date/time and location specified. The user accepts all responsibility for the accuracy and completeness of the information contained.

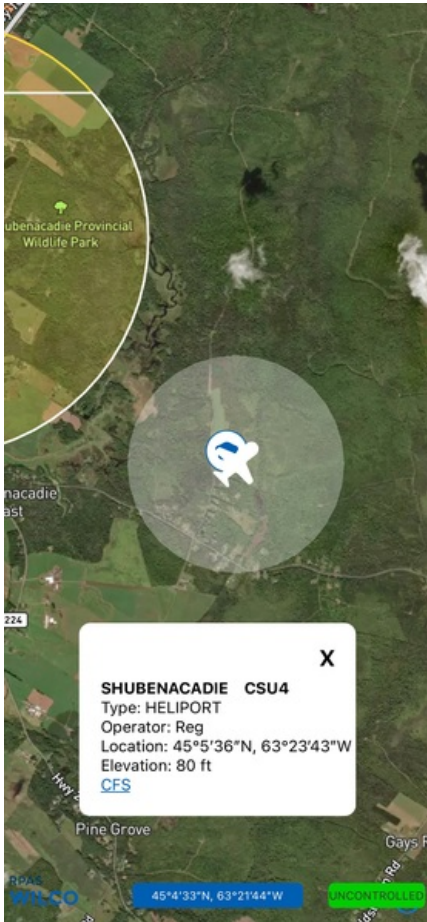
For the complete Terms & Conditions, see

<https://rpswilco.com/#/tnc>



Included

- Site Survey
- Obstacles (if available)
- Nearby Aerodromes
- Canadian Aviation Regulations
- GFA
- Aerodrome Supplements
 - METAR & TAF (if available)
 - NOTAMS
 - CFS

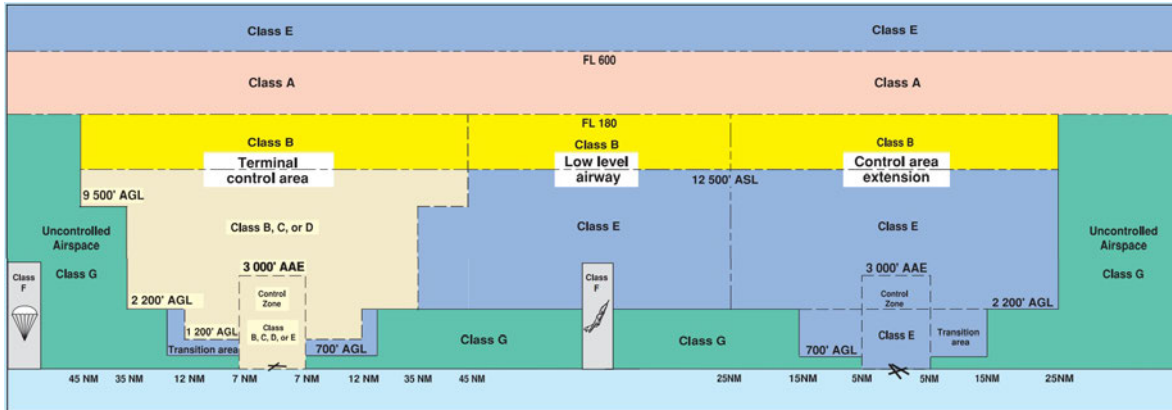
Flight Map



MAP Details

	Latitude	Longitude
 MODEL	45° 4' 33.40" N (45.076)	63° 21' 43.90" W (-63.362)
 Pilot	45° 4' 37.00" N (45.0769)	63° 21' 47.50" W (-63.3632)

Airspace Classification



Overlying Airspaces

Class	Name	Floor	Ceiling
B	Halifax, NS TCA XPNDR MANDTRY	12500MSL	18000MSL
D	Halifax, NS TCA XPNDR MANDTRY	2900MSL	12500MSL
E	Halifax, NS TA	700AGL	12500MSL
B	Halifax, NS TA	12500MSL	18000MSL
E	V310 Airway	2200AGL	12500MSL
B	V310 Airway	12500MSL	18000MSL
B	T672 Airway	12500MSL	18000MSL
E	T672 Airway	2200AGL	12500MSL
E	T783 Airway	2200AGL	12500MSL
B	T783 Airway	12500MSL	18000MSL
D	Halifax, NS TCA XPNDR MANDTRY	1700MSL	2900MSL
E	CHARLO, NB CAE	2200AGL	12500MSL
B	CHARLO, NB CAE	12500MSL	18000MSL

Nearest Aerodromes & Distance from Operation

SHUBENACADIE (CSU4 HELIPOINT Reg)	Lat: 45.093 Long: 63.395	3.198 KM	1.73 NM
STANFIELD INTL (CYHZ AERODROME Cert)	Lat: 44.879 Long: 63.51	24.794 KM	13.39 NM
TRURO (COLCHESTER HEALTH CENTRE) (CEH9 HELIPOINT Cert)	Lat: 45.349 Long: 63.305	30.691 KM	16.57 NM
DEBERT (CCQ3 AERODROME Reg)	Lat: 45.419 Long: 63.461	38.922 KM	21.02 NM

Canadian Aviation Regulations

Division III — General Operating and Flight Rules

For full listing please visit <https://laws-lois.justice.gc.ca/eng/regulations/SOR-96-433/FullText.html#s-901.27>

Visual Line-of-sight

- **901.11 (1)** Subject to subsection (2) no pilot shall operate a remotely piloted aircraft system unless the pilot or a visual observer has the aircraft in visual line-of-sight at all times during flight.
- **(2)** A pilot may operate a remotely piloted aircraft system without the pilot or a visual observer having the aircraft in visual line-of-sight if the operation is conducted in accordance with a special flight operations certificate — RPAS issued under section 903.03.

Procedures

- **901.23 (1)** No pilot shall operate a remotely piloted aircraft system unless the following procedures are established:
 - **(a)** normal operating procedures, including pre-flight, take-off, launch, approach, landing and recovery procedures; and
 - **(b)** emergency procedures, including with respect to
 - **(i)** a control station failure,
 - **(ii)** an equipment failure,
 - **(iii)** a failure of the remotely piloted aircraft,
 - **(iv)** a loss of the command and control link,
 - **(v)** a fly-away, and
 - **(vi)** flight termination.
- **(2)** If the manufacturer of the remotely piloted aircraft system provides instructions with respect to the topics referred to in paragraphs (1)(a) and (b), the procedures established under subsection (1) shall reflect those instructions.
- **(3)** No pilot shall conduct the take-off or launch of a remotely piloted aircraft unless the procedures referred to in subsection (1) are reviewed before the flight by, and are immediately available to, each crew member.
- **(4)** No pilot shall operate a remotely piloted aircraft system unless the operation is conducted in accordance with the procedures referred to in subsection (1).

Site Survey

901.27 No pilot shall operate a remotely piloted aircraft system unless, before commencing operations, they determine that the site for take-off, launch, landing or recovery is suitable for the proposed operation by conducting a site survey that takes into account the following factors:

- **(a)** the boundaries of the area of operation;
- **(b)** the type of airspace and the applicable regulatory requirements;
- **(c)** the altitudes and routes to be used on the approach to and departure from the area of operation;
- **(d)** the proximity of manned aircraft operations;
- **(e)** the proximity of aerodromes, airports and heliports;
- **(f)** the location and height of obstacles, including wires, masts, buildings, cell phone towers and wind turbines;
- **(g)** the predominant weather and environmental conditions for the area of operation; and
- **(h)** the horizontal distances from persons not involved in the operation.

Operations at or in the Vicinity of an Aerodrome, Airport or Heliport

- **901.47 (1)** No pilot shall operate a remotely piloted aircraft at or near an aerodrome that is listed in the *Canada Flight Supplement* or the *Water Aerodrome Supplement* in a manner that could interfere with an aircraft operating in the established traffic pattern.
- **(2)** Subject to section 901.73 no pilot shall operate a remotely piloted aircraft at a distance of less than
 - **(a)** three nautical miles from the centre of an airport; and
 - **(b)** one nautical mile from the centre of a heliport.
- **(3)** No pilot shall operate a remotely piloted aircraft at a distance of less than three nautical miles from the centre of an aerodrome operated under the authority of the Minister of National Defence unless the operation is conducted in accordance with a special flight operations certificate — RPAS issued under section 903.03.

Records

- **901.48 (1)** Every owner of a remotely piloted aircraft system shall keep the following records:
 - **(a)** a record containing the names of the pilots and other crew members who are involved in each flight and, in respect of the system, the time of each flight or series of flights and
 - **(b)** a record containing the particulars of any mandatory action and any other maintenance action, modification or repair performed on the system, including
 - **(i)** the names of the persons who performed them,
 - **(ii)** the dates they were undertaken,
 - **(iii)** in the case of a modification, the manufacturer, model and a description of the part or equipment installed to modify the system, and
 - **(iv)** if applicable any instructions provided to complete the work.
- **(2)** Every owner of a remotely piloted aircraft system shall ensure that the records referred to in subsection (1) are made available to the Minister on request and are retained for a period of
 - **(a)** in the case of the records referred to in paragraph (1)(a), 12 months after the day on which they are created; and
 - **(b)** in the case of the records referred to in paragraph (1)(b), 24 months after the day on which they are created.
- **(3)** Every owner of a remotely piloted aircraft system who transfers ownership of the system to another person shall, at the time of transfer, also deliver to that person all of the records referred to in paragraph (1)(b).

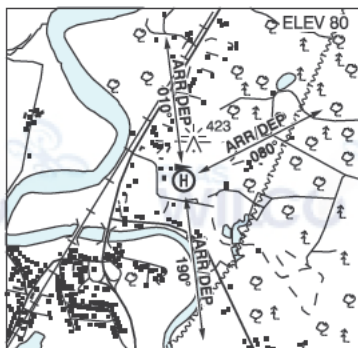
NOVA SCOTIA

AERODROME/FACILITY DIRECTORY

SHUBENACADIE NS (Heli)

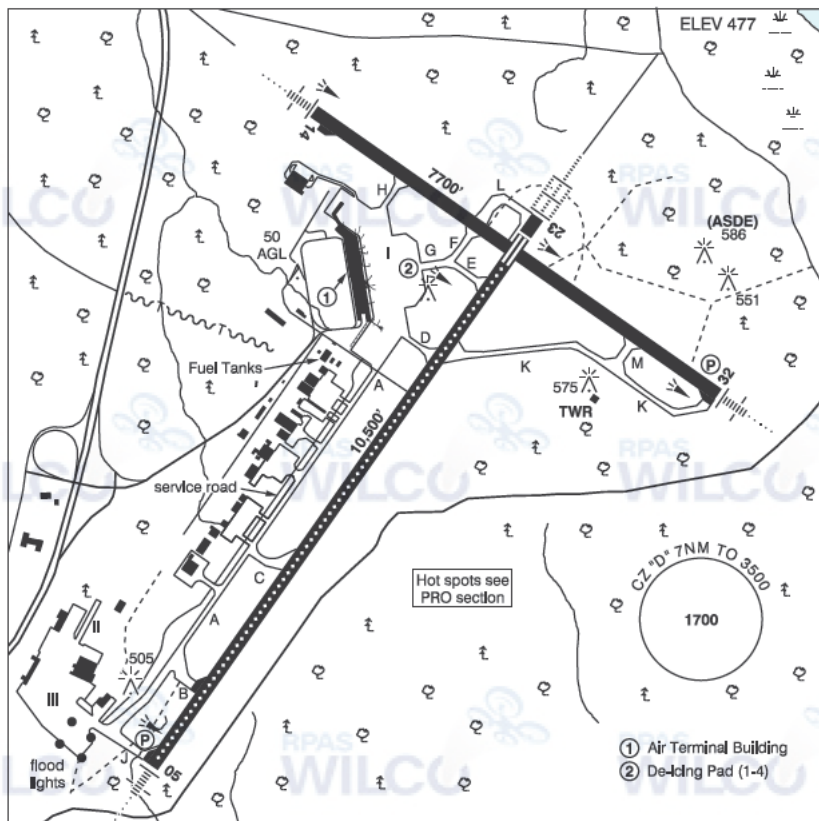
CSU4

REF	N45 05 36 W63 23 43 Adj ENE 17°W (2021) UTC-4(3) Elev 80' A5003
OPR	NS Dept of Natural Resources and Renewables 902-758-3438 Reg PPR PN for RCMP, DND, Cdn Coast Guard, MEDEVAC.
PF	B-1 C-2,4,7,8 D-3,5,6
FLT PLN	FIC London 866-WXBRIEF (Toll free within Canada) or 866-541-4104 (Toll free within Canada & USA)
HELI DATA	FATO 100' dia GRASS Parking Pad 1: 42'dia CONC Parking Pad 2: 42'dia CONC Parking Pad 3: 42'dia CONC RCR Opr
LIGHTING	RF(FH)
COMM	ATF tfc 123.2 5NM 3100 ASL
PRO	Arr/dep 010° & 080° & 190° fr heli.
CAUTION	Lgtd twr 423 ASL (315 AGL) 0.13NM NE



HALIFAX / STANFIELD INTL NS

CYHZ



REF	N44 52 47 W63 30 37 14NNE 18°W (2012) UTC-4(3) Elev 477' A5003 LO8 HI6 T2 CAP OC
OPR	Halifax International Airport Authority 902-873-2578 Cert
PF	A-1,2,3,5,6,7
CUST	AOE 888-226-7277
FLT PLN	
FIC	London 866-WXBRIEF (Toll free within Canada) or 866-541-4104 (Toll free within Canada & USA)
ACC	(IFR only) Moncton 506-867-7177 or 866-480-8200.
WX	METAR H24. TAF H24, issue times: 00, 03, 06, 09, 12, 15, 18, 21Z WxCam

NOVA SCOTIA

AERODROME / FACILITY DIRECTORY

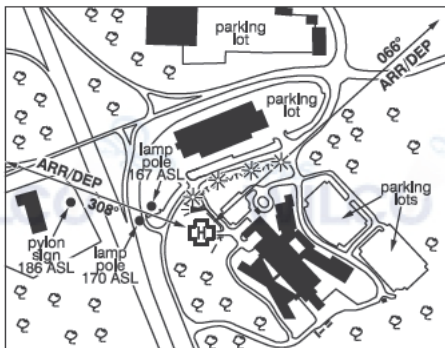
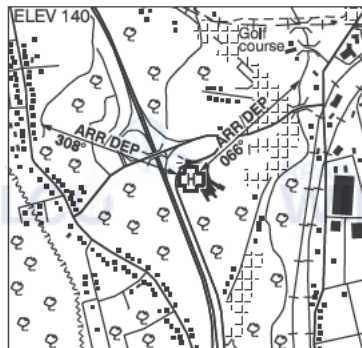
HALIFAX / STANFIELD INTL NS (Cont'd)

CYHZ

SERVICES	
FUEL	100LL, JA-1 (FSII avbl)
OIL	All
S	1,2,3
ARFF	DESIGNATED CAT 8
SUP FL	ADI, D & A-ice
JASU	Elect Start Stewart-Stevenson 2650 Air Start
PVT ADV	Shell Aerocentre 123.4; PAL Aviation Services 129.3; Gateway Fac ULC 129.1 902-873-1900
MIL CON	Innotech Aviation Services (Shell) 902-873-3737
RWY DATA	Rwy 05(053°)/23(233°) 10500x200 ASPH/CONC Thld 23 displ 361' Rwy 14(143°)/32(323°) 7700x200 ASPH Rwy 32 down 0.54% RESA: All Rwy 492'
RWY CERT	Rwy 05 RVR 1200(1/4sm)/Rwy 23 RVR 600 AGN V Rwy 14 RVR 1200(1/4sm)/Rwy 32 RVR 1200(1/4sm) AGN V
RCR	Opr CRFI, PLR/PCN
LIGHTING	05-AN(TE HI CL)P3, 14-AN(TE HI), 23-AL(TE HI CL TDZL), 32-AN(TE HI)P3
COMM	
RCO	London rdo 123.275 (FISE) 126.7 (bcst) (E) (emerg only 519-452-4049)
ATIS	121.0
CLNC DEL	123.95
GND	121.9 275.8
TWR	118.4 236.6 (E) (emerg only 902-873-1364)
TML	119.2 118.7 128.55 363.8
PAL	Moncton Ctr 135.3
NAV	
VOR/DME	YHZ 115.1 Ch 98 N44 55 23 W63 24 07 (604')
DME	IHZ 109.1 Ch 28 N44 53 35 W63 30 48 (449')
ILS	IJG 109.9 (Rwy 23) RVR LOC reliable only w/ in 10° either side of centreline; IHZ 109.1 (Rwy 14) RVR LOC reliable only within 10° either side of centreline.
LOC	IGX 109.9 (Rwy 05) LOC reliable only within 10° either side of centreline.
PRO	In vis RVR 2600 (1/2 SM) or greater, Rwy 23 dep will be fr Twy E (9100 FT) unless otherwise requested. Pilots should refer to Canadian Airport Charts (CAC) to obtain details on established hot spots, prior to operating on maneuvering areas. CAC are available for free on the NAV CANADA website. DE-ICING OPERATIONS 1. Ctc de-icing provider 30 min prior to dep if de-icing is rqrd. Notify de-icing provider of any special treatments prior to pushback: ICE MAN 122.950 or 902-410-7748. 2. De-icing provider will assign de-ice pad and advise when ready. 3. DO NOT PUSH prior to assigned de-ice pad being ready. 4. To mitigate congestion on the APN, QUEUING for de-icing is NOT ACCEPTABLE. 5. Monitor Halifax GND 121.9 for all APN movement. 6. Follow instructions to designated de-ice pad. 7. Advise ICEMAN immediately once brakes set, acft configured and engines at idle. 8. After de-icing, configure acft for taxi, however, DO NOT MOVE ACFT. 9. Once instructed, ctc Halifax GND 121.9 for taxi.
CAUTION	Extensive bird activity in vic of rwys Oct-Mar.

TRURO (COLCHESTER HEALTH CENTRE) NS (Heli)

CEH9



REF	N45 20 59 W63 18 20 1.3WSW 18°W (2013) UTC-4(3) Elev 140' A5003
OPR	Colchester East Hants Health Centre 902-893-4321; O/T 902-893-5554 ext 42222 Cert PPR
PF	A-1,4 C-2,3,5,6
FLT PLN	
FIC	London 866-WXBRIEF (Toll free within Canada) or 866-541-4104 (Toll free within Canada & USA)
ACC	(IFR only) Moncton 506-867-7177 or 866-480-8200
HELI DATA	FATO/TLOF 79' dia ASPH Safety Area 105' Max heli overall length 52.49'
RCR	Opr
LIGHTING	RW(LO) green
COMM	
ATF	tfc 123.0 5NM 2900 ASL
PRO	Arr/dep 066° fr heli, Slope 12% (H2). Arr/dep 308° fr heli (H1).
CAUTION	Heli lies within CYR747 PPR Opr. P-Line N to NE of pad ball marked and lit (portion of P-Line btwn the lit power poles under 308° arr/dep path is buried). Power and lamp poles E of pad marked and lit. Civic centre NE of pad marked with obst lights. Roadway (hosp entry drive) E of heli. Sloped hillside NW of pad. Treed area on embankment, to aprx 65' abv pad elev W of hosp aprx 120' S of pad.

NOVA SCOTIA

AERODROME/FACILITY DIRECTORY

DEBERT NS

CCQ3

REF	N45 25 09 W63 27 41 18°W (2013) UTC-4(3) Elev 136' A5003 LO8 HI6 CAP	
OPR	Debert Flight Center 902-662-2228 or 902-897-3175 Reg	
PF	B-1 C-2,3 D-4,5,6	
CUST	AEO/25 888-226-7277 12-02Z†; AOE/CAN	
FLT PLN		
FI	London 866-WXBRIEF (Toll free within Canada) or 866-541-4104 (Toll free within Canada & USA)	
ACC	(IFR only) Moncton 506-867-7177 or 866-480-8200.	
WX	AUTO H24 (see COMM) WxCam	
SERVICES		
FUEL	100LL, JA	
OIL	15W50	
RWY DATA	Rwy 05(048°)/23(228°) 3144x150 asphalt Rwy 23 down 0.53% Rwy 09(091°)/27(271°) 4999x150 asphalt Rwy 16(153°)/34(333°) 5001x150 asphalt Thld 16 displ 500'.	
RCR	Opr Ltd win maint	
LIGHTING	09-(TE LO), 27-(TE LO) ARCAL-123.0 type J PN	
COMM		
ATF	UNICOM ltd hrs O/T tfc 123.0 5NM 3100 ASL	
ARR	Halifax Tml 119.2	
DEP	Halifax Tml 119.2	
AUTO	122.275	
PRO	Refer to Halifax/Stanfield VTPC for info on local tng areas and Class D airspace. Rgt hand circuits auth for gliders & tow planes (CAR 602.96). DO NOT OVERFLY AERODROME dur glider ops. Glider ops 123.0 dur glider activity.	
CAUTION	GLIDER: Glider activity Jun-Aug. Vehicle & acft launching. TWYS: All twys ruf. PARADROPS: Paradrops Jan to May & Sep to Dec below 12,500 ASL within 2NM. RWY: Rwy 05/23 surfaces deteriorating. 2000' abandoned portion of Rwy 05/23 suitable for taxi only. Lgtd twr 407 ASL (295 AGL) aprx 1.8NM SW.	